

VDPConfigTool User's Manual

(Windows Version)

V1.0.1

Important Safeguards and Warnings

Please read the following safeguards and warnings carefully before using the product in order to avoid damages and losses.

Note:

- Do not expose the device to lampblack, steam or dust. Otherwise it may cause fire or electric shock.
- Do not install the device at position exposed to sunlight or in high temperature. Temperature rise in device may cause fire.
- Do not expose the device to humid environment. Otherwise it may cause fire.
- The device must be installed on solid and flat surface in order to guarantee safety under load and earthquake. Otherwise, it may cause device to fall off or turnover.
- Do not place the device on carpet or quilt.
- Do not block air vent of the device or ventilation around the device. Otherwise, temperature in device will rise and may cause fire.
- Do not place any object on the device.
- Do not disassemble the device without professional instruction.

Warning:

- Please use battery properly to avoid fire, explosion and other dangers.
- Please replace used battery with battery of the same type.
- Do not use power line other than the one specified. Please use it properly. Otherwise, it may cause fire or electric shock.

Special Announcement

- This manual is for reference only.
- All the designs and software here are subject to change without prior written notice.
- All trademarks and registered trademarks are the properties of their respective owners.
- If there is any uncertainty or controversy, please refer to the final explanation of us.
- Please visit our website for more information.

Table of Contents

1	Product Overview	1
1.1	Overview	1
1.2	Homepage.....	1
2	Daily Operation	4
2.1	Configure System Setting	4
2.2	Add Device	5
2.2.1	Add Single Device	5
2.2.2	Batch Add	6
2.3	Modify IP	8
2.3.1	Modify One IP	8
2.3.2	Batch Modify IP	9
2.4	Configure System Info	10
2.4.1	Time Sync.....	10
2.4.2	Reboot	11
2.4.3	Default	12
2.5	Upgrade Device	13
2.5.1	Single Upgrade.....	13
2.5.2	Batch Upgrade	14
2.6	Set Template	16
2.6.1	Export Device Template	16
2.6.2	Template Application	18

1 Product Overview

1.1 Overview

VDPConfigTool is a system tool, mainly serves VDP such as VTO and VTH with the following functions

- Modify IP address of VTH and VTO.
- Sync device time, reboot device and restore to default.
- Upgrade VTO and VTH.
- Export video config, audio config, VTH management, log, and card info.
- Import video config, audio config, VTH management.

1.2 Homepage

Open VDPConfig, homepage is shown in Figure 1-1 and Chart 1-1.

Note:

Enable the tool, it will auto search device following search setup. When you enable search for the first time after installation, “Current Segment Searched” is checked by default.

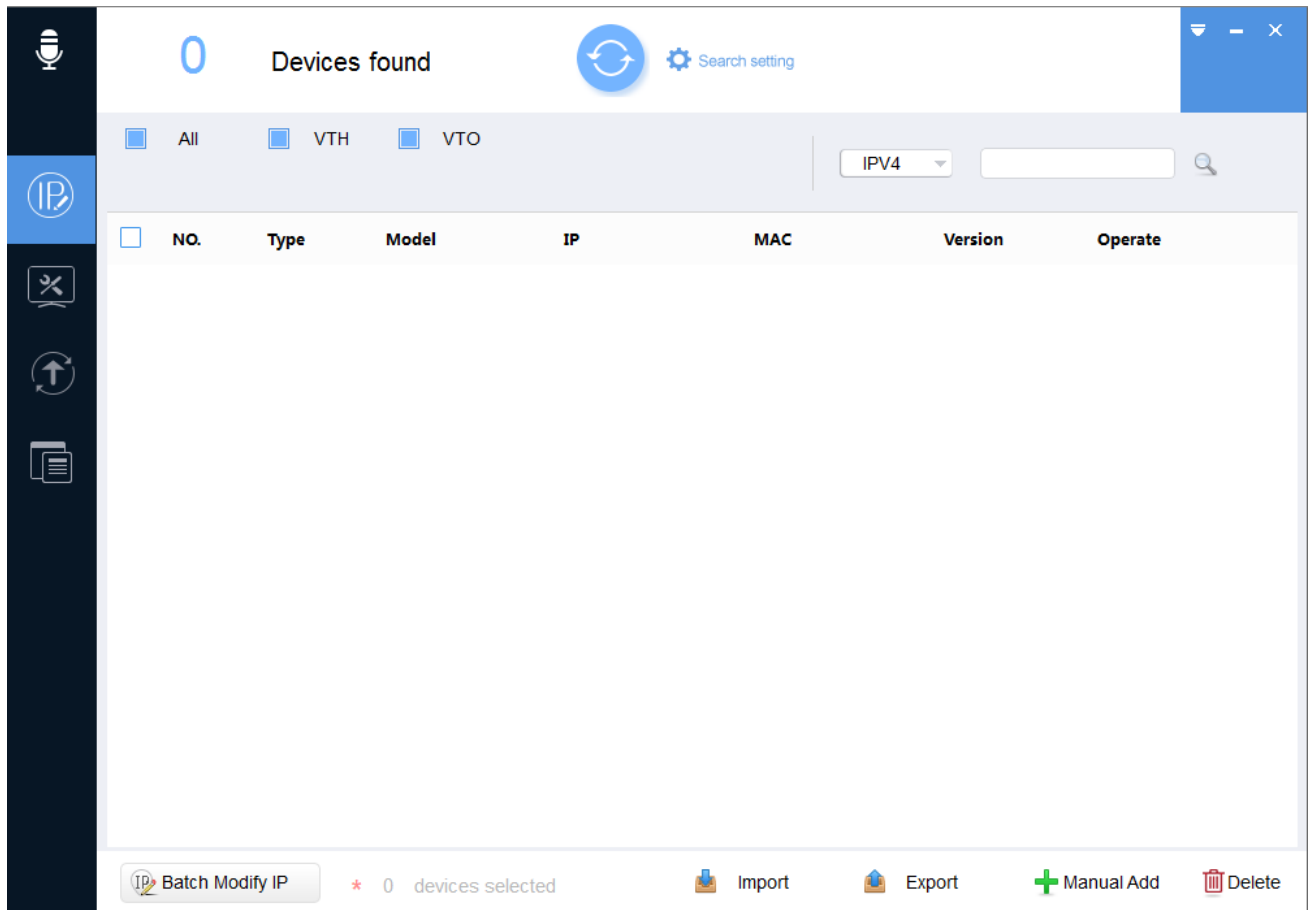







Figure 1-1

No.	Function	Description
1	Menu	<p>It includes the following four tabs:</p> <p>: one by one or batch modify device IP.</p> <p>: set system time, auto reboot or manually reboot, and restore default settings.</p> <p>: upgrade device one by one or as batch.</p> <p>: manage and apply template. Template info includes audio, video, card and etc.</p>
2	Search Setting	<p>Search for device by IP.</p> <p>Click  to refresh search device list.</p>







3	Help	<p>You can view help document and software version, set system settings, minimize or exit software.</p> <ul style="list-style-type: none"> ● Click , view help document and software info, set search device spare port and upgrade. ● Click  to minimize software. ● Click  to exit.
4	Filter	Quickly filter device (by type, IP, model, MAC address, version)
5	Device List	<p>It shows searched device and device info, including type, model, IP, MAC and version. In Operation list, click  to view device details. Click  to quickly open device WEB config interface. Click  to modify device IP.</p>
6	Function Config	<p>You can batch modify device IP, import device, export device or delete device.</p> <ul style="list-style-type: none"> ● Select device, click Batch Modify IP, so you can change IP of multiple devices. ● Click Import, to batch import device. ● Select device, click Export to export selected devices. ● Select device, click Delete to delete device.

Chart 1-1

2 Daily Operation

2.1 Configure System Setting

Set spare port of device search, and upgrade timeout and network timeout.

Step 1. In homepage select  > Setting. See Figure 2-1.

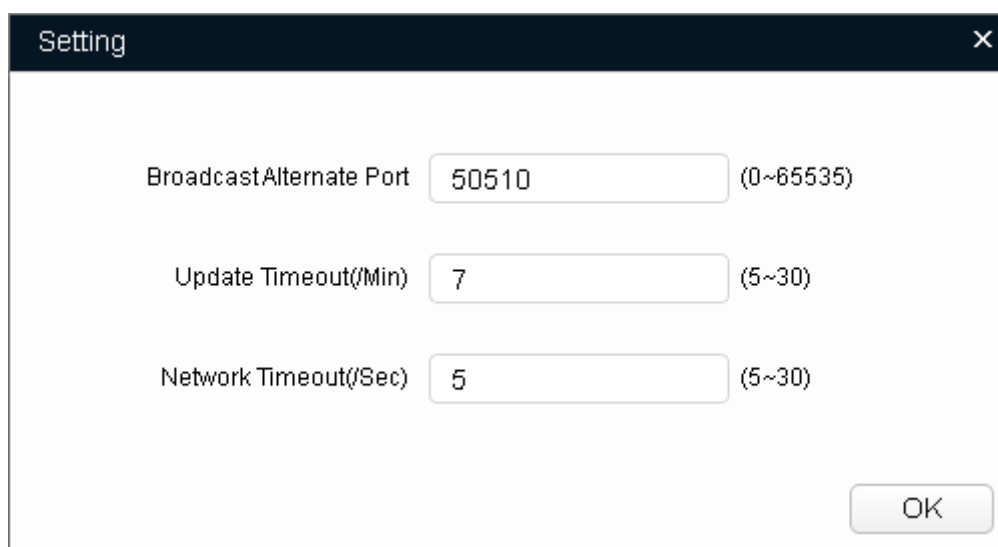
A screenshot of a 'Setting' dialog box. The dialog has a title bar with 'Setting' and a close button (X). Inside, there are three rows of settings. Each row consists of a label, a text input field, and a range in parentheses. The first row is 'BroadcastAlternate Port' with the value '50510' and range '(0~65535)'. The second row is 'Update Timeout(/Min)' with the value '7' and range '(5~30)'. The third row is 'Network Timeout(/Sec)' with the value '5' and range '(5~30)'. An 'OK' button is located at the bottom right of the dialog.

Figure 2-1

Step 2. Set system setting, see Chart 2-1.

Parameter	Note
Broadcast Alternate Port	Alternate port used to search device. When default broadcast port cannot find device, tool will auto switch this port for device search.
Update Timeout	When device is updating, max update time of a single device. When device updating time exceeds this value, the system stops device updating.
Network Timeout	When device is updating, max network time. When device network time exceeds this value, the system stops device updating.

Chart 2-1

Step 3. Click OK.

2.2 Add Device

Warning:

Ensure the device and PC where VDPCongig is installed are connected via Internet, otherwise VDPCongig cannot searched the device.

2.2.1 Add Single Device

Step 1. Click .

Step 2. Click Manual Add, see Figure 2-2.

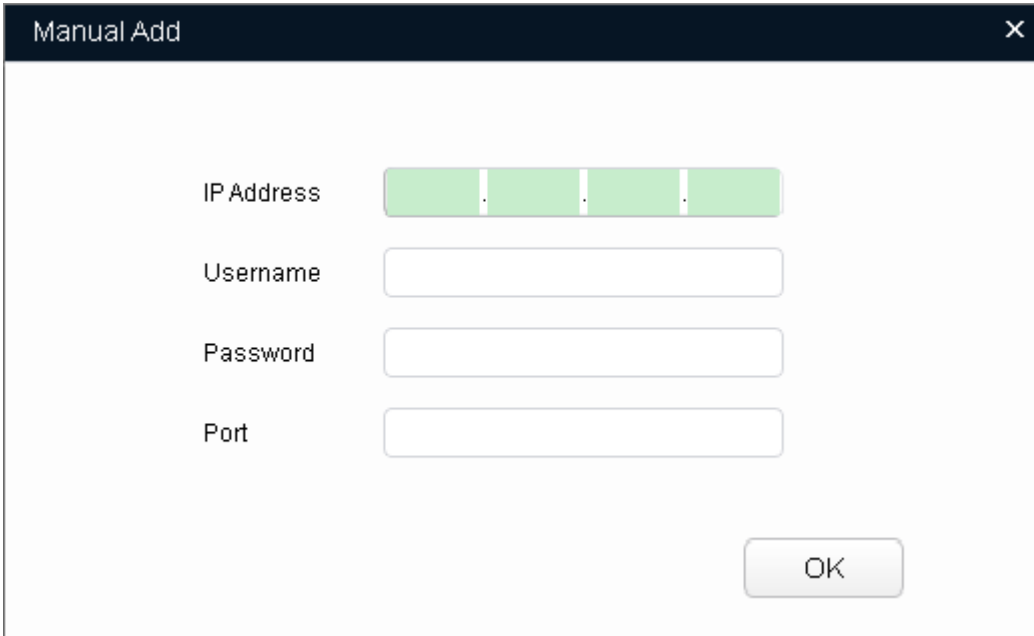
A screenshot of a 'Manual Add' dialog box. The dialog has a dark blue title bar with the text 'Manual Add' and a close button (X) on the right. The main area is white and contains four input fields: 'IP Address' (a green field with three vertical dividers), 'Username' (a white field), 'Password' (a white field), and 'Port' (a white field). An 'OK' button is located at the bottom right of the dialog.

Figure 2-2

Step 3. Set device parameter, see Chart 2-2.

Parameter	Note
IP Address	Add device IP address
Username	Login device username and password
Password	
Port	Device port no.

Chart 2-2

Step 4. Click OK.

Note:

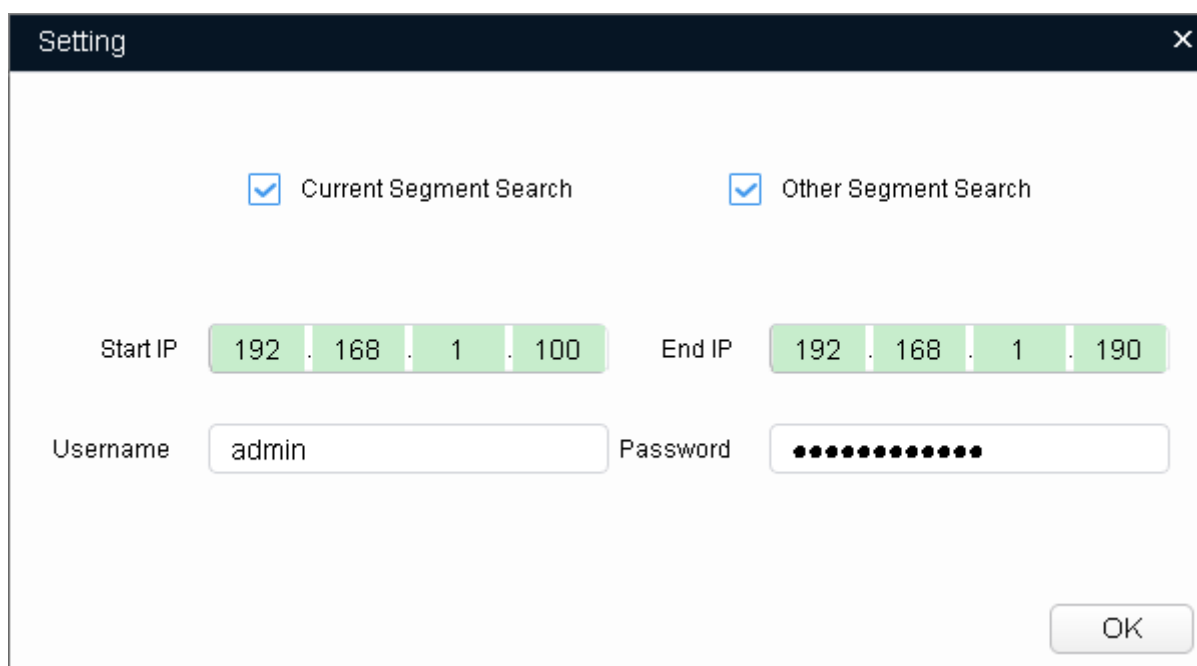
You can set search criteria to quickly filter device.

2.2.2 Batch Add

2.2.2.1 Add by Search

Batch add device by search. The system supports search of devices in current segment.

Step 1. Click  [Search setting](#) . See Figure 2-3.



Setting

☒ Current Segment Search ☒ Other Segment Search

Start IP 192 . 168 . 1 . 100 End IP 192 . 168 . 1 . 190

Username admin Password ••••••••••

OK

Figure 2-3

Step 2. According to actual condition, select search method.

- Select “Current Segment Search”, and set username and password. System searches device in current segment. This is the default method.
- Select “Other Segment Search”, and set start IP, end IP, username and password. System searches device in set segment.

Note:


- When “Current Segment Search” and “Other Segment Search” are both selected, the system meantime searched device in current segment and set segment.
- Username and password are used to modify IP, device parameter, set system parameter and upgrade device.

Step 3. Click OK.

The system starts to search device.

After search, it shows searched devices.

Note:

- Click  to refresh searched device list.
- By setting filter, you can quickly find device matching the filter from result.
- When you close the tool, it will save search criteria for next time use.

2.2.2.2 Add by Template

Add device by template, to quickly add designated device into the system.

2.2.2.2.1 Get Template

Manually fill in template file or export device file info from system as template.

- Fill in template file.
- Export device info.

Background

- Template file (.xls) must be opened and edited by Excel.
- When you delete record in template, you must select corresponding rows, and right click Delete to delete record.

Fill in Template File

Step 1. In directory of tool, open template file.

Step 2. Fill in device parameter, see Chart 2-3.

Parameter	Note
Type	Mandatory, device type, fill in ARC.
Model	Optional, device model
IP	Mandatory, device IP address
Port	Mandatory, device port
MAC	Mandatory, device MAC address, please get from device label.
SN	Optional, device SN
Version	Optional, device version
Subnet Mask	Optional, device subnet mask
Gateway	Optional, device gateway

Chart 2-3

Step 3. Save and close template file.

Export Device Info

Export searched device info, and used to add device or back up device info.

Step 1. Click .

Step 2. Select device to export, click Export.

Step 3. Select storage path, set device name and click Save.

System starts to export device. When device export is complete, in pop-up box click OK.

You can view exported device info under storage path.

2.3 Modify IP


You can modify a single IP or batch modify IP.

- You can modify device IP one by one when there are few devices or login passwords of device are not the same.
- You can batch modify device IP when login passwords of device are the same.

2.3.1 Modify One IP

Step 1. Click .

System shows Modify IP Address interface.

Step 2. Click  of device you want to modify its IP.

Step 3. Set mode, target IP, subnet mask and gateway.

- DHCP mode: When there is DHCP server in network, set mode to DHCP, then device auto gets IP address from DHCP mode.
- Static: Set mode to static, and fill in device IP, subnet mask and gateway. The device IP is changed to the IP you fill in here.


Note:

If the device is not in device list, please search device again, see Ch 2.2.

Step 4. Click OK.

Figure 2-4

2.3.2 Batch Modify IP

Step 1. Click  to enter batch modify IP interface.

Step 2. Select device you want to modify IP.

Note:

If the device is not in device list, please search device again, see Ch 2.2.


Step 3. Click  Batch Modify IP, system pops up Modify IP box. See Figure 2-5.

Figure 2-5

Step 4. Set mode, target IP, subnet mask and gateway.

- DHCP mode: When there is DHCP server in network, set mode to DHCP, then device auto gets IP address from DHCP mode.

- Static: Set mode to static, and fill in device IP, subnet mask and gateway. The device IP is changed to the IP you fill in here.


Note:

Check Same IP will set the same IP for all devices involved.

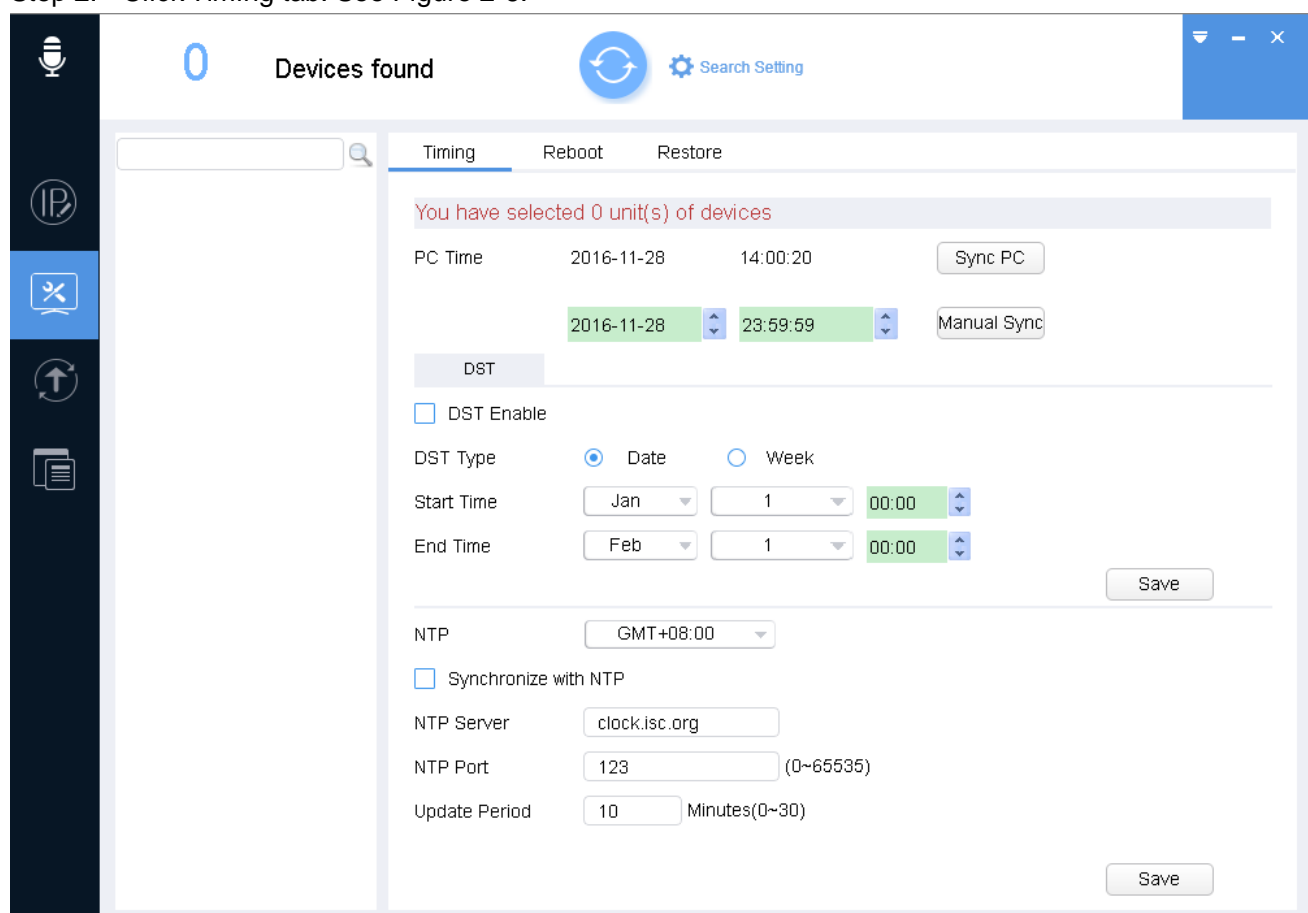
Step 5. Click OK. Device IP will be modified from by IP sequence.

2.4 Configure System Info

2.4.1 Time Sync

Step 1. Click , system shows system config interface.

Step 2. Click Timing tab. See Figure 2-6.



The screenshot shows the 'Timing' tab in the system configuration interface. At the top, it says '0 Devices found'. Below this, there are three tabs: 'Timing', 'Reboot', and 'Restore'. The 'Timing' tab is selected. The main content area has a message: 'You have selected 0 unit(s) of devices'. Below this, there are fields for 'PC Time' (2016-11-28, 14:00:20) and a 'Sync PC' button. There are also fields for '2016-11-28' and '23:59:59' with a 'Manual Sync' button. A section for 'DST' (Daylight Saving Time) is visible, with a checkbox for 'DST Enable' (unchecked). Below this, 'DST Type' is set to 'Date' (radio button selected). 'Start Time' is set to 'Jan 1 00:00' and 'End Time' is set to 'Feb 1 00:00'. There is a 'Save' button at the bottom right of this section. Another section for 'NTP' (Network Time Protocol) is visible, with a dropdown set to 'GMT+08:00'. There is a checkbox for 'Synchronize with NTP' (unchecked). Below this, 'NTP Server' is set to 'clock.isc.org', 'NTP Port' is set to '123' (with a note '(0~65535)'), and 'Update Period' is set to '10' (with a note 'Minutes(0~30)'). There is another 'Save' button at the bottom right of this section.

Figure 2-6

Step 3. Select one or more devices

Note:

If the device is not in device list, please search device again, see Ch 2.2.

Step 4. Set time.

You can use either of the following method to modify time.

- Enter time, click manually sync.
- Click Sync PC, to sync time with PC.
- Sync with NTP server, please refer to Chart 2-4.

Parameter	Note
NTP Server	Set NTP server IP.
NTP Port	Set NTP server port.
Update Period	Interval of update.

Chart 2-4

Step 5. (Optional) Select DST Enable, set DST. See Chart 2-5. Click Save.


Note:

You need this step if operating device in nation requiring DST.

Parameter	Note
DST Type	Select type to be date or week.
Start Time	Set start time and end time of DST.
End Time	

Chart 2-5

2.4.2 Reboot

Step 1. Click , system shows system config interface.

Step 2. Click Reboot tab, system shows reboot interface. See Figure 2-7.

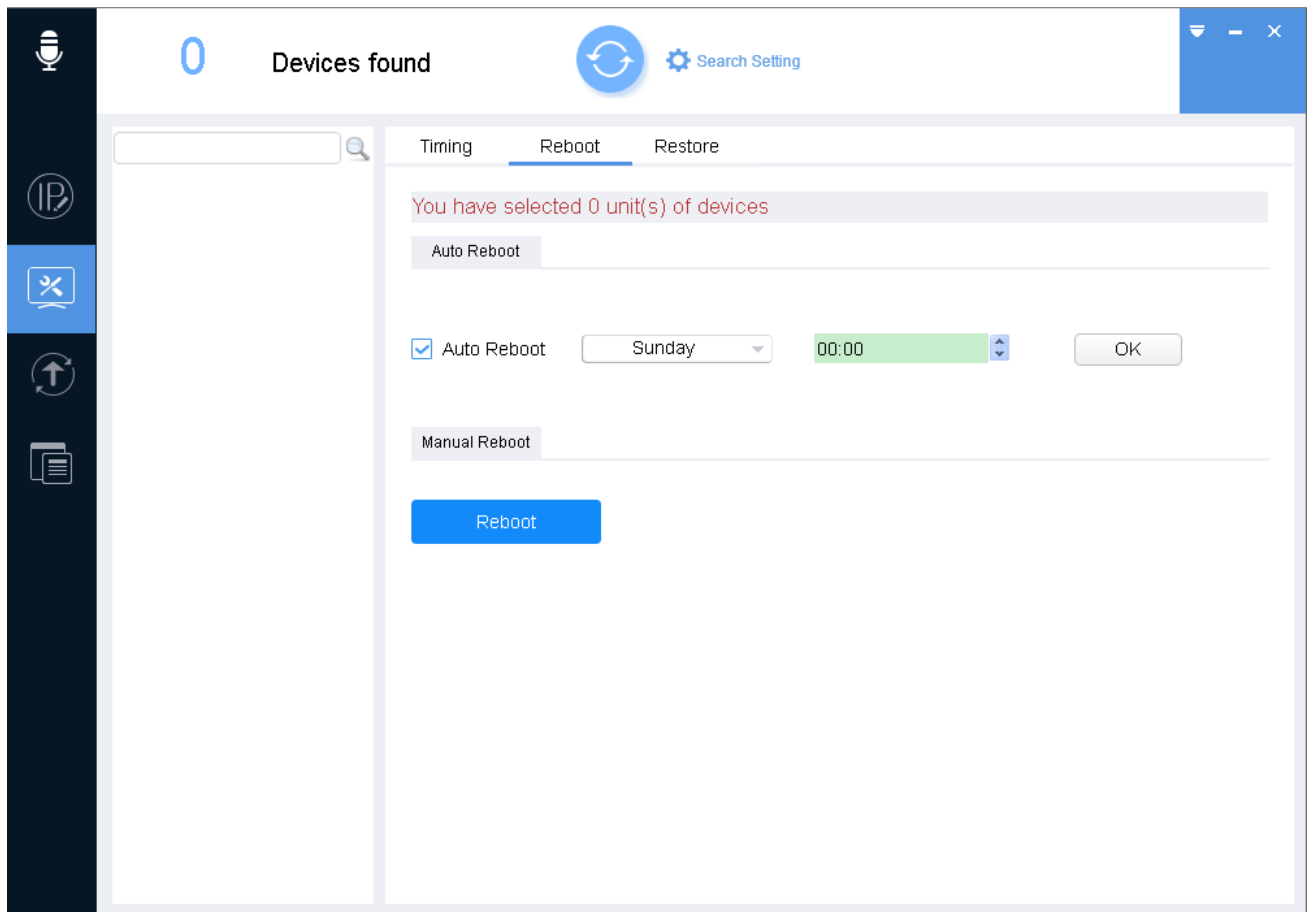


Figure 2-7

Step 3. Select one or more devices.

Note:

If the device is not in device list, please search device again, see Ch 2.2.

Step 4. Click Reboot.


- Check Auto reboot, set reboot week and time, click OK.
- Click Reboot to reboot immediately.

Warning:

Reboot will cause operation interruptions, so please reboot device when operation is not frequent.

2.4.3 Default

Default function is to restore device network config (exclude IP), general config and etc.

Step 1. Click , system shows system config interface.

Step 2. Click Restore tab, system shows Restore interface. See Figure 2-8.

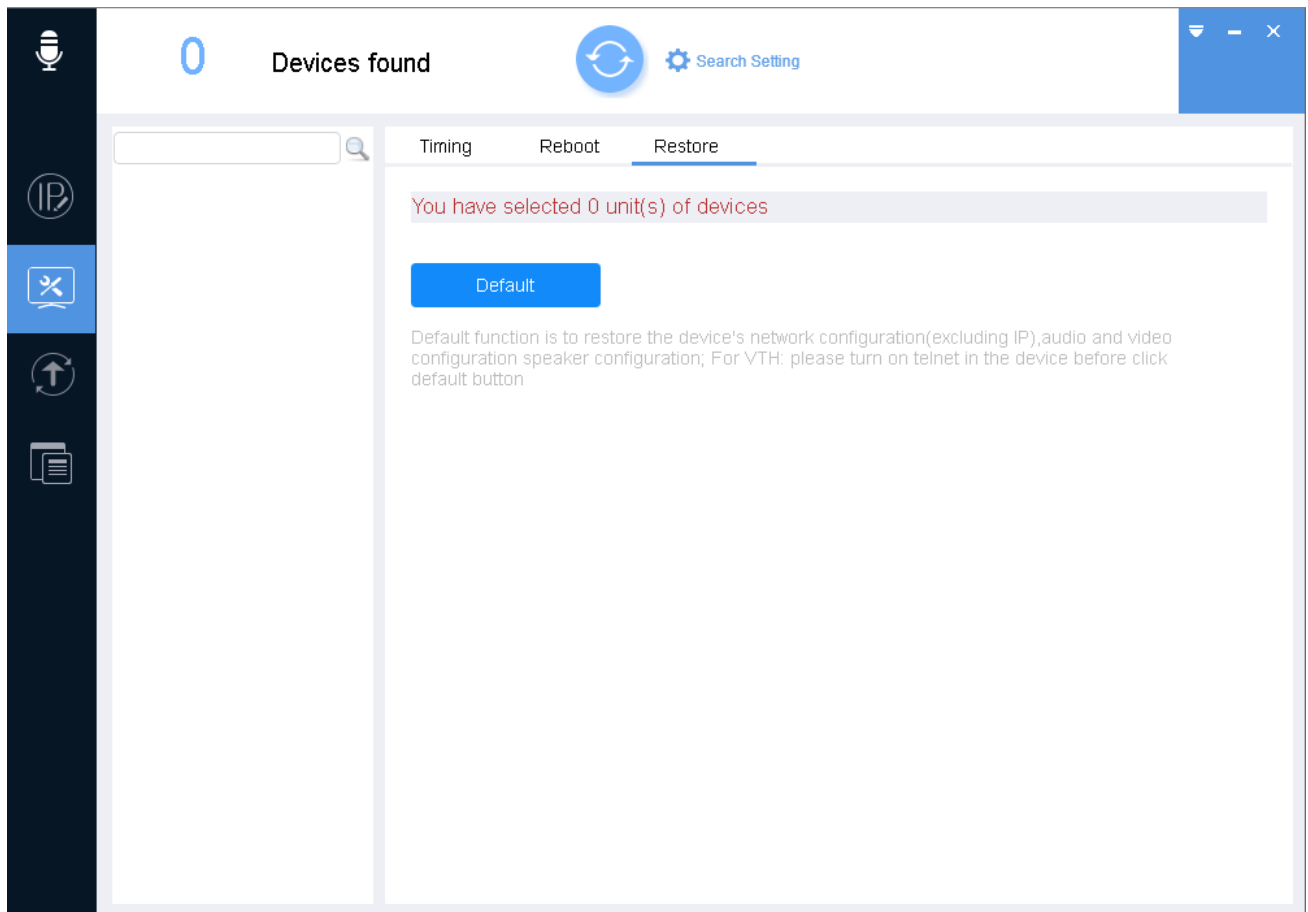


Figure 2-8

Step 3. Select one or more devices.

Note:


If the device is not in device list, please search device again, see Ch 2.2.

Step 4. Click Default.

2.5 Upgrade Device

VDPCongfigTool supports to upgrade one device and upgrade multiple devices.

2.5.1 Single Upgrade

Step 1. Click , system shows upgrade interface, see Figure 2-9.

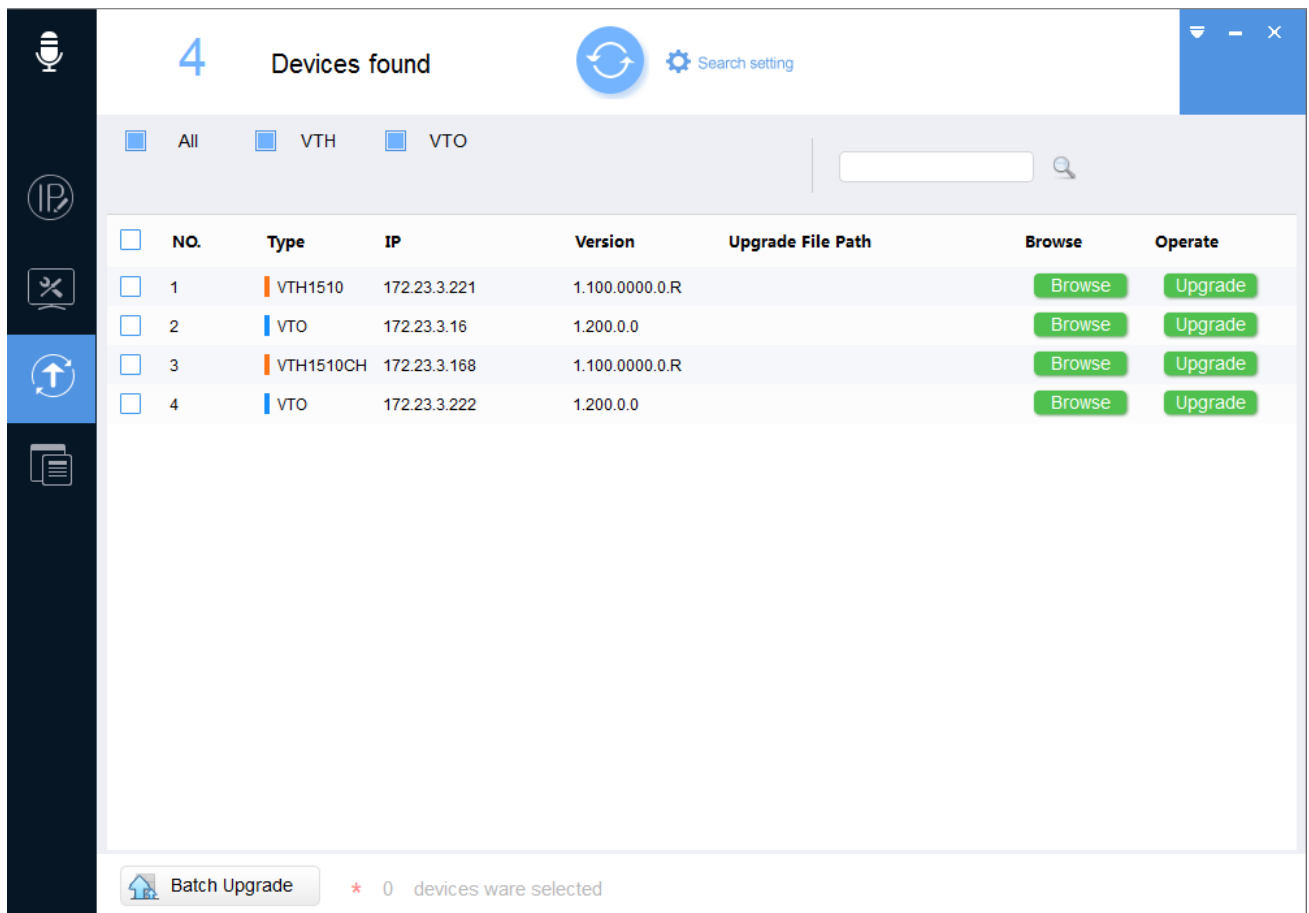


Figure 2-9

Step 2. Click a device you want to upgrade, select upgrade file, see Figure 2-9.

1. Click Browse of corresponding device you want to upgrade.
2. Select upgrade file.
3. Click Open.

Note:

If the device is not in device list, please search device again, see Ch 2.2.

Step 3. After you click Upgrade, system will start to upgrade and show progress of update. When upgrading is complete, device will auto reboot

Note:

If device goes offline during upgrading process, then VDPConfigTool will stop at upgrading interface and once device is online again, upgrading will continue.

2.5.2 Batch Upgrade

Step 1. Click , system shows upgrade interface, see Figure 2-10.

Step 2. Check devices you want to upgrade

Note:

- If the device is not in device list, please search device again, see Ch 2.2.
- The selected devices must be update to the same version of software.

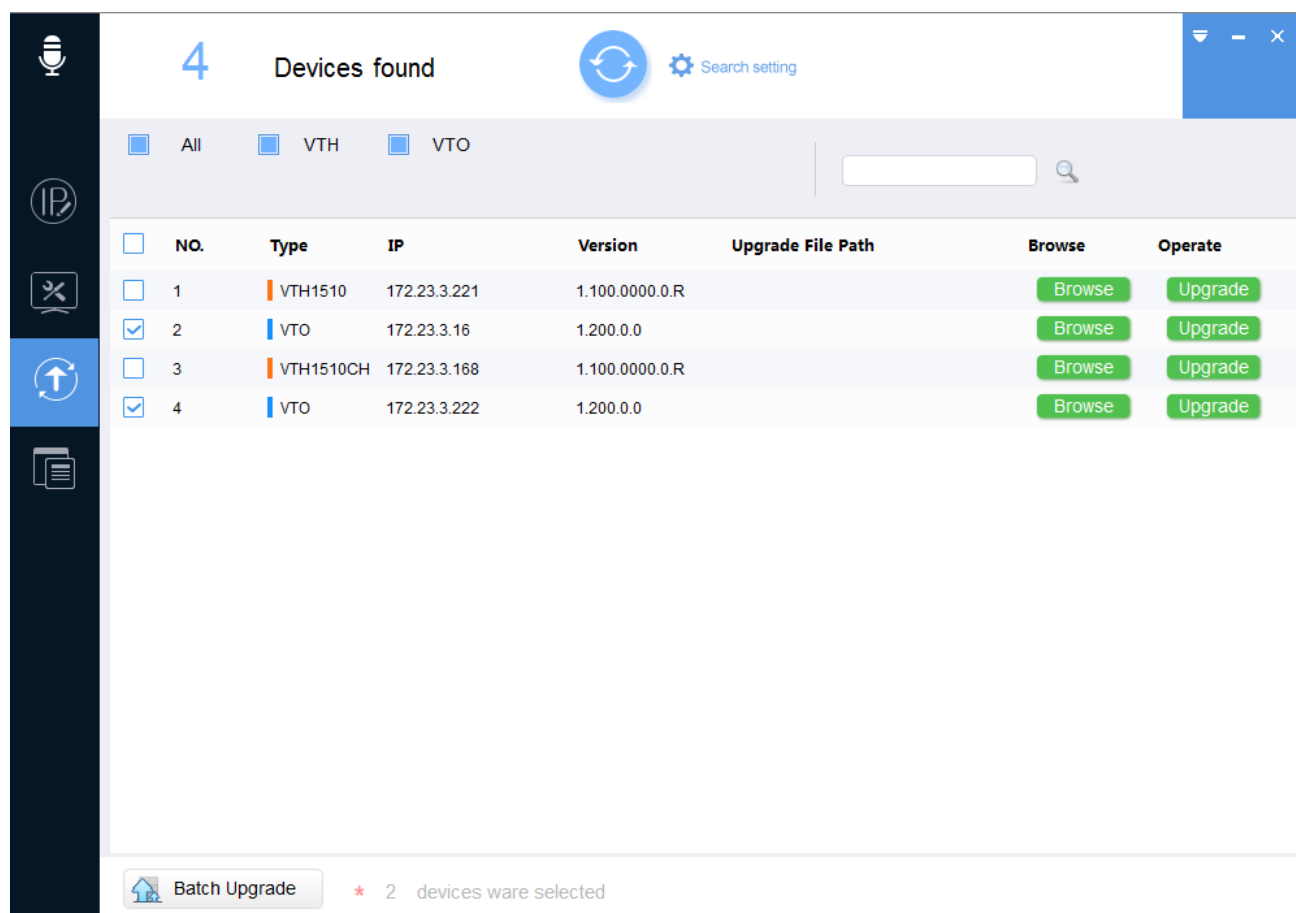


Figure 2-10

Step 3. Click Batch Upgrade, system shows Batch Upgrade interface.

Step 4. Click Open, select file, see Figure 2-11.

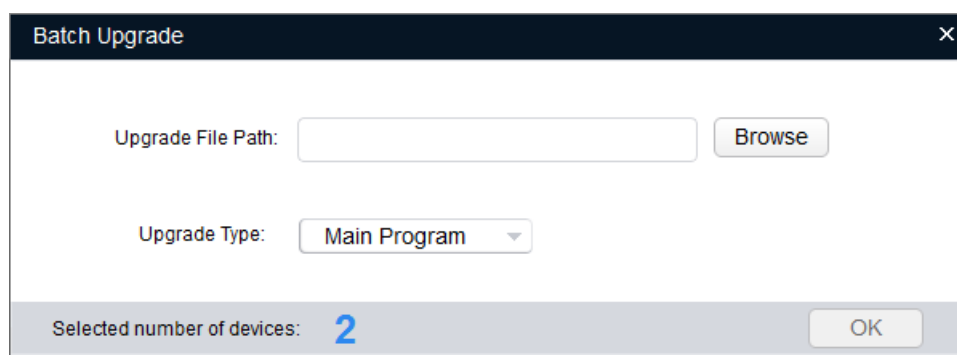


Figure 2-11

Step 5. Click OK, system starts to upgrade.

Note:

If devices go offline during upgrading process, then VDPConfigTool will stop at upgrading

interface and once device is online again, upgrading will continue.

2.6 Set Template

It includes export device template and application template.

- By exporting device template, you can back up or save device video config, audio config, VTH management, card info and log.
- By applying saved template, you can restore or batch config device video config, audio config, VTH management, card info and log.

2.6.1 Export Device Template

By exporting device template, you can back up or save device video config, audio config, VTH management, card info and log.

Step 1. Click . See Figure 2-12.

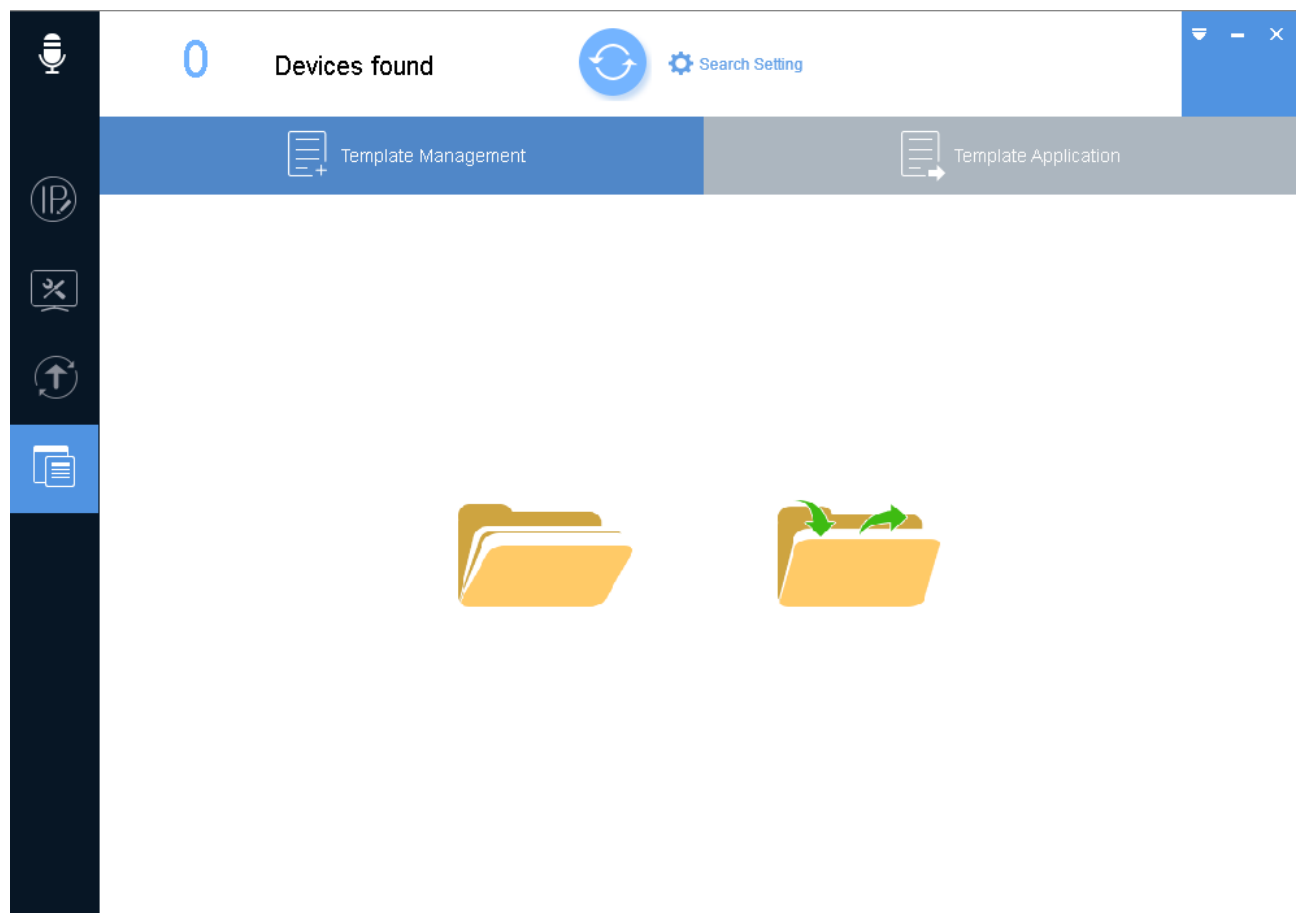



Figure 2-12

Step 2. Export template.

1. Click . System shows prompt box, click Cancel. System shows Template Management interface, see Figure 2-13.

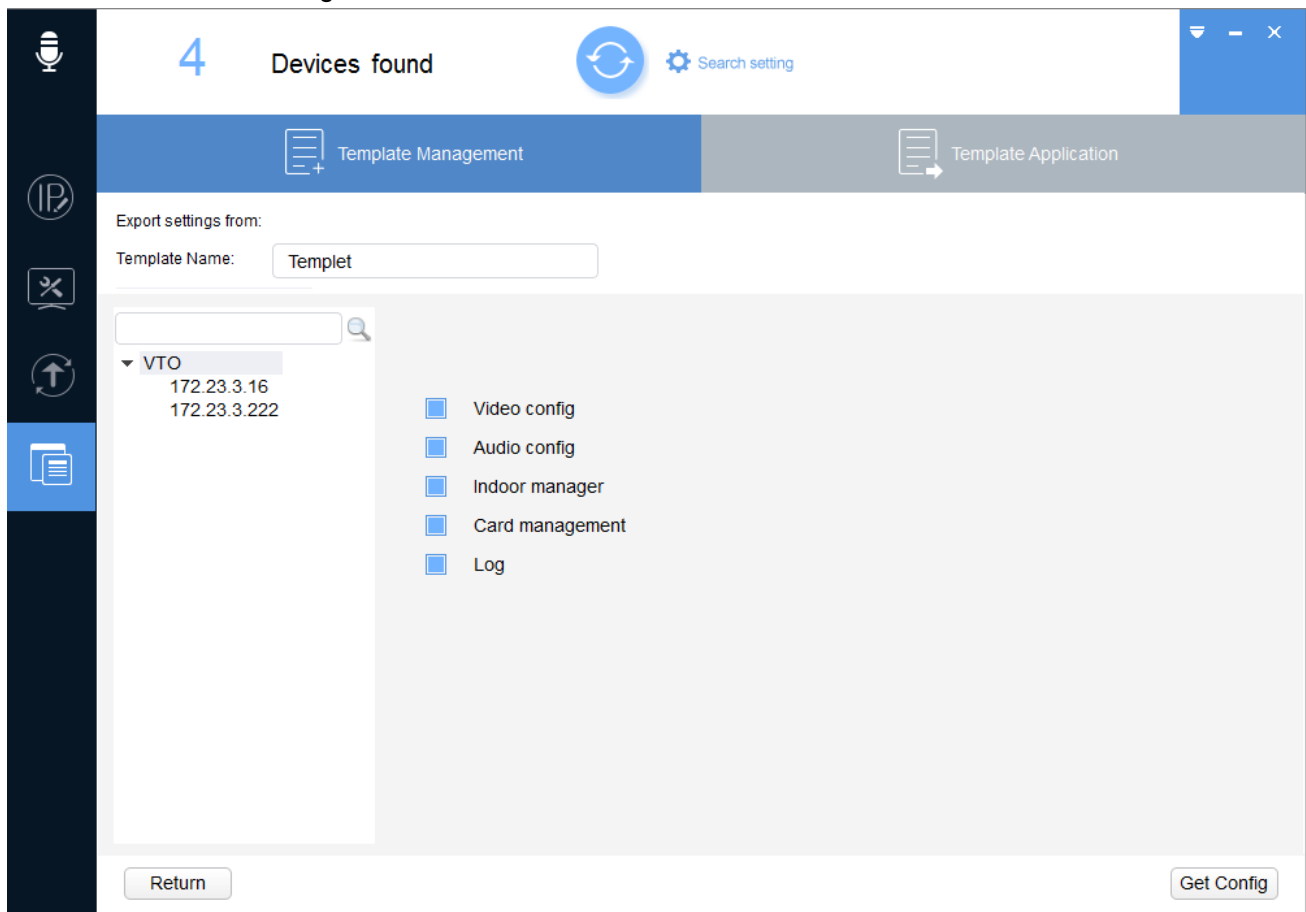


Figure 2-13

2. In device list, select device, set template name, and select info to export.

Step 3. Save template.

1. Click Template Application, system pops up Load Template box, see Figure 2-14.

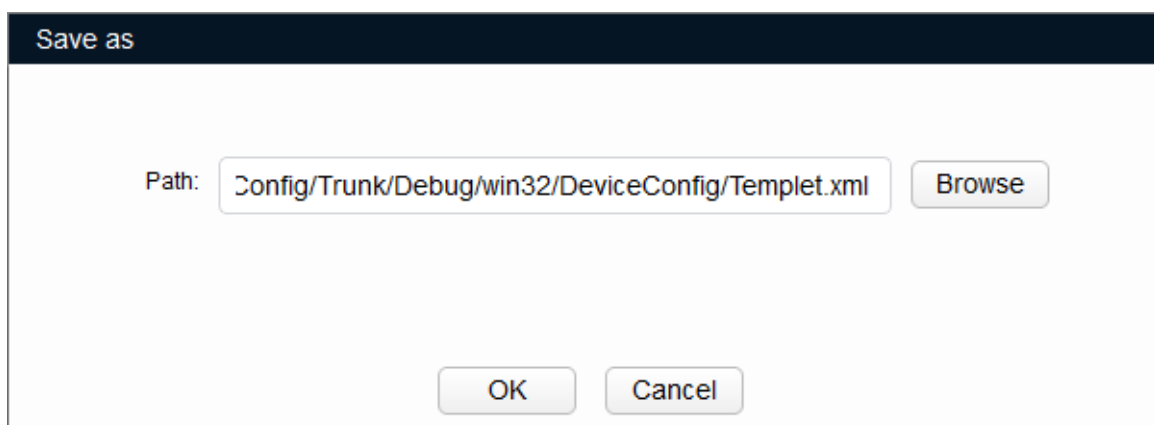


Figure 2-14

2. Click OK, select storage path of template.
3. Click OK to save template. See Figure 2-15.

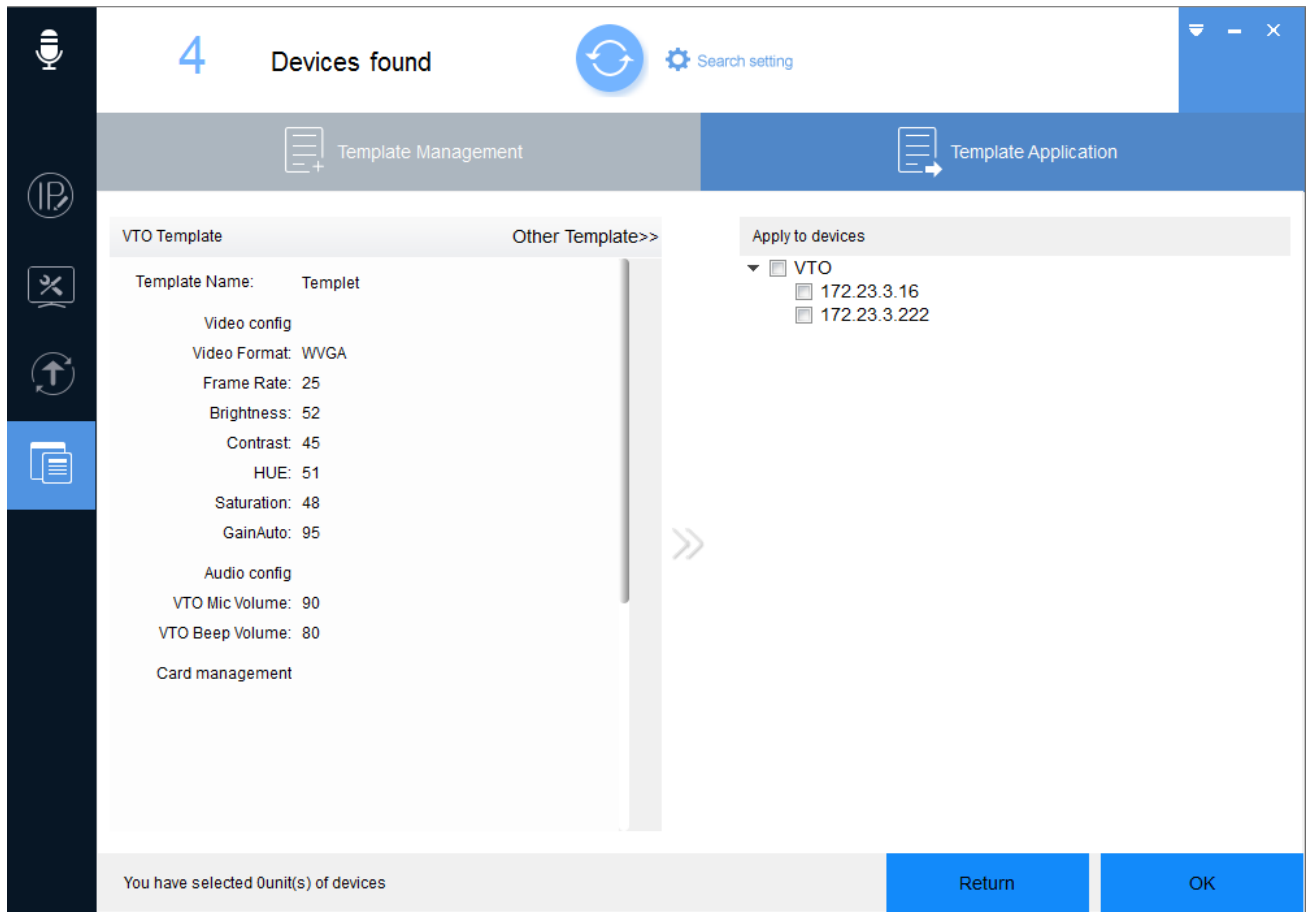


Figure 2-15

Step 4. Select device you want to modify parameter, click OK.

System pops up Application Template box, click OK, system starts to apply template.

When template is applied, device shows result.  means there is failed parameter setup. 

means there is successful parameter setup. Click either  or  to view details.

Note:

- Click Other Template to switch template.
- If the device is not in device list, please search device again, see Ch 2.2.

2.6.2 Template Application

By applying saved template, you can restore or batch config device video config, audio config, VTH management, card info and log.

Step 1. Click . See Figure 2-16.

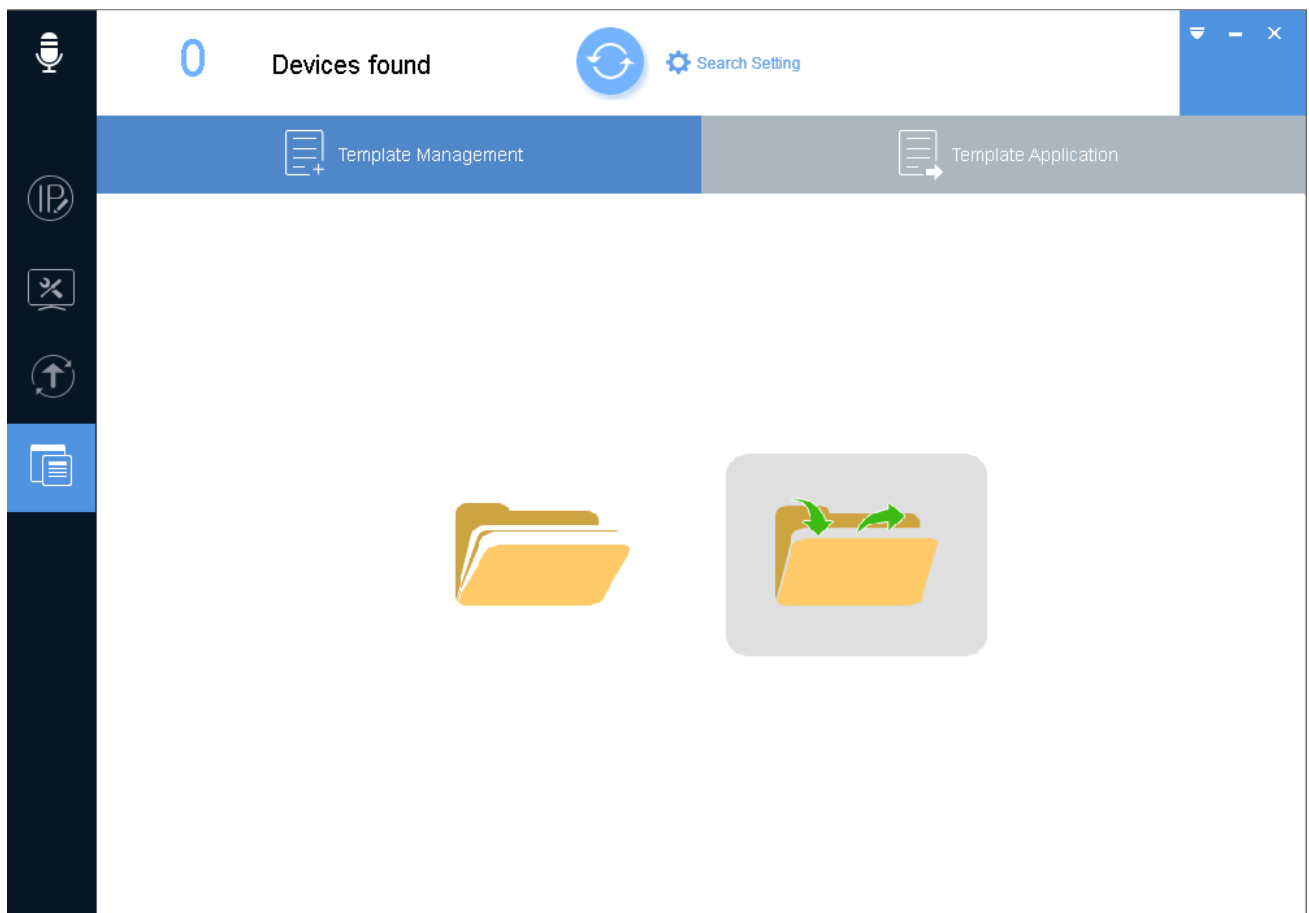


Figure 2-16

Step 2. Load template.

1. Click . See Figure 2-17.

Note:

Before loading template, make sure the template file exists. If there is no template file, please see Ch 2.6.1.

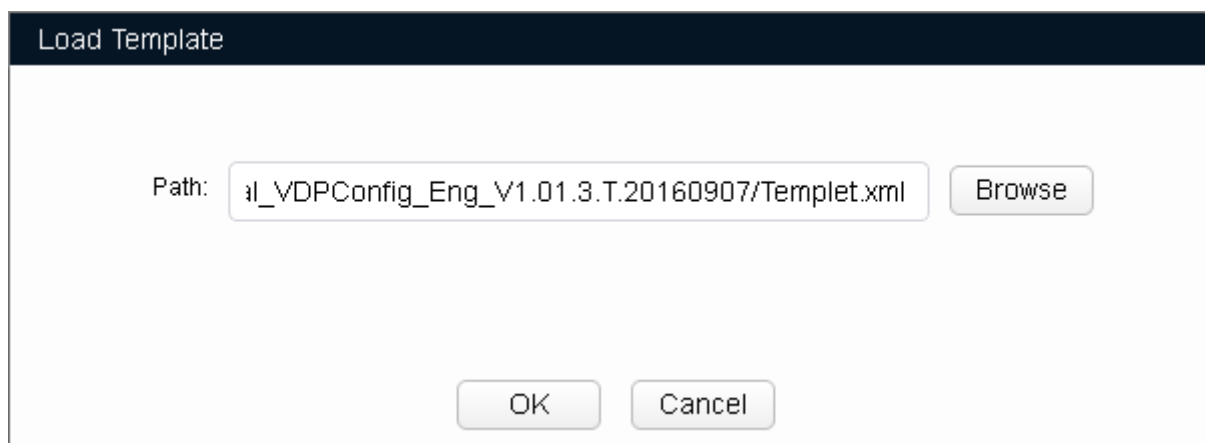


Figure 2-17

2. Click Open, select template file.
3. Click OK, see Figure 2-18.

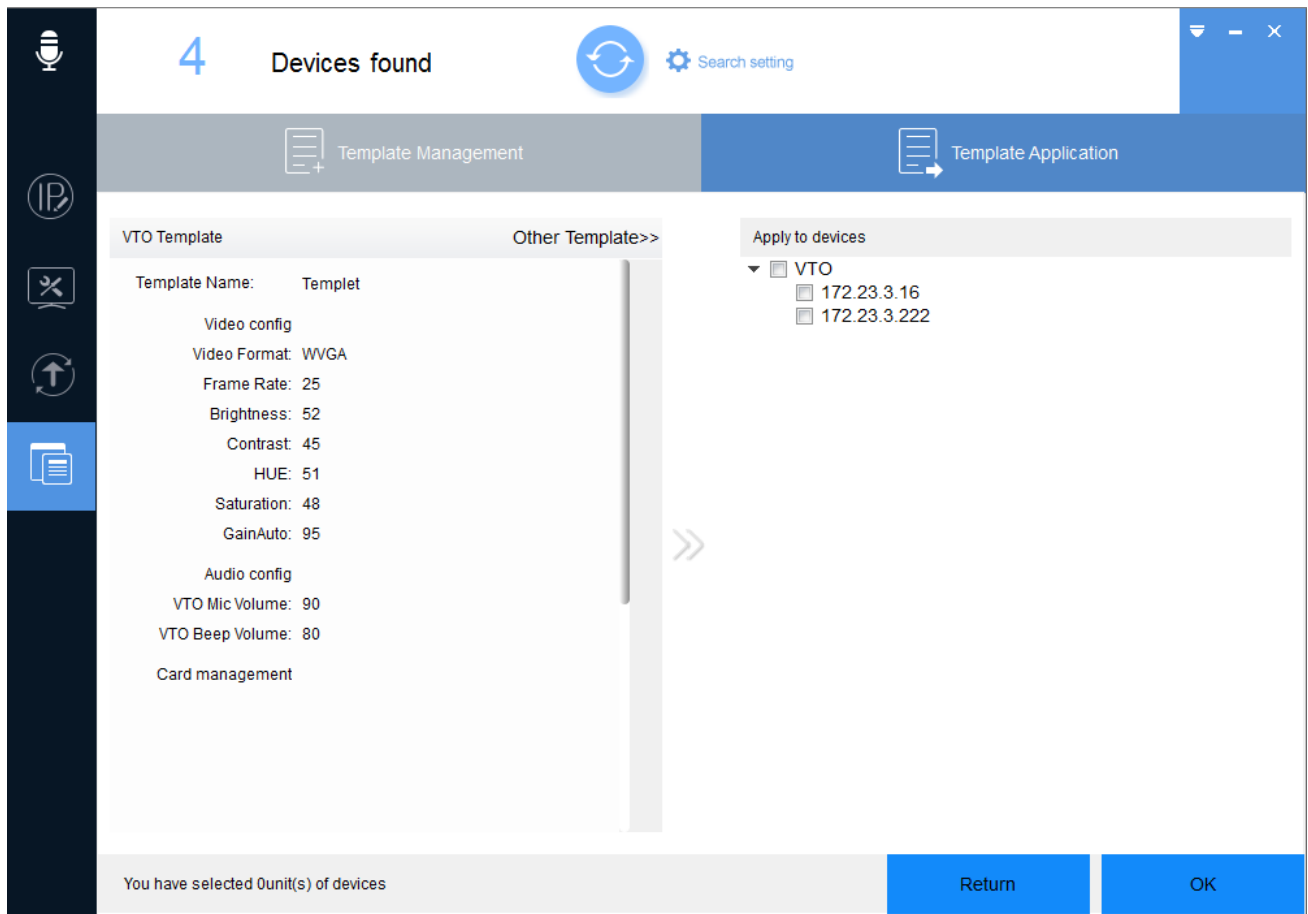




Figure 2-18

Step 3. Select device you want to modify parameter, click OK.

System pops up Application Template box, click OK. System starts to apply template.

When template is applied, device shows result.  means there is failed parameter setup. 

means there is successful parameter setup. Click either  or  to view details.

Note:

- Click Other Template to switch template.
- If the device is not in device list, please search device again, see Ch 2.2.

Note:

- **This manual is for reference only. Slight difference may be found in the user interface.**
- **All the designs and software here are subject to change without prior written notice.**
- **All trademarks and registered trademarks are the properties of their respective owners.**
- **If there is any uncertainty or controversy, please refer to the final explanation of us.**
- **Please visit our website or contact your local service engineer for more information.**